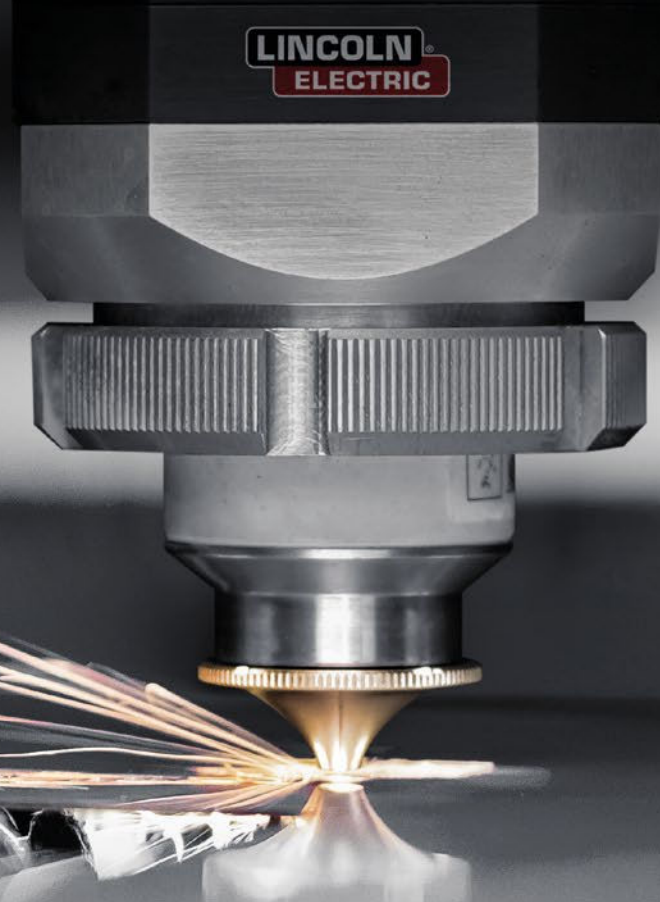


LINC-CUT FIBER 1530 A

Fiber Laser Cutting Machine
Double Shuttle Table 1500 x 3000



LINC-CUT FIBER 1530A

YOUR SOLUTION FOR FIBER LASER CUTTING



PRODUCTIVITY

**SUPERIOR
CUT
QUALITY**

SAFETY

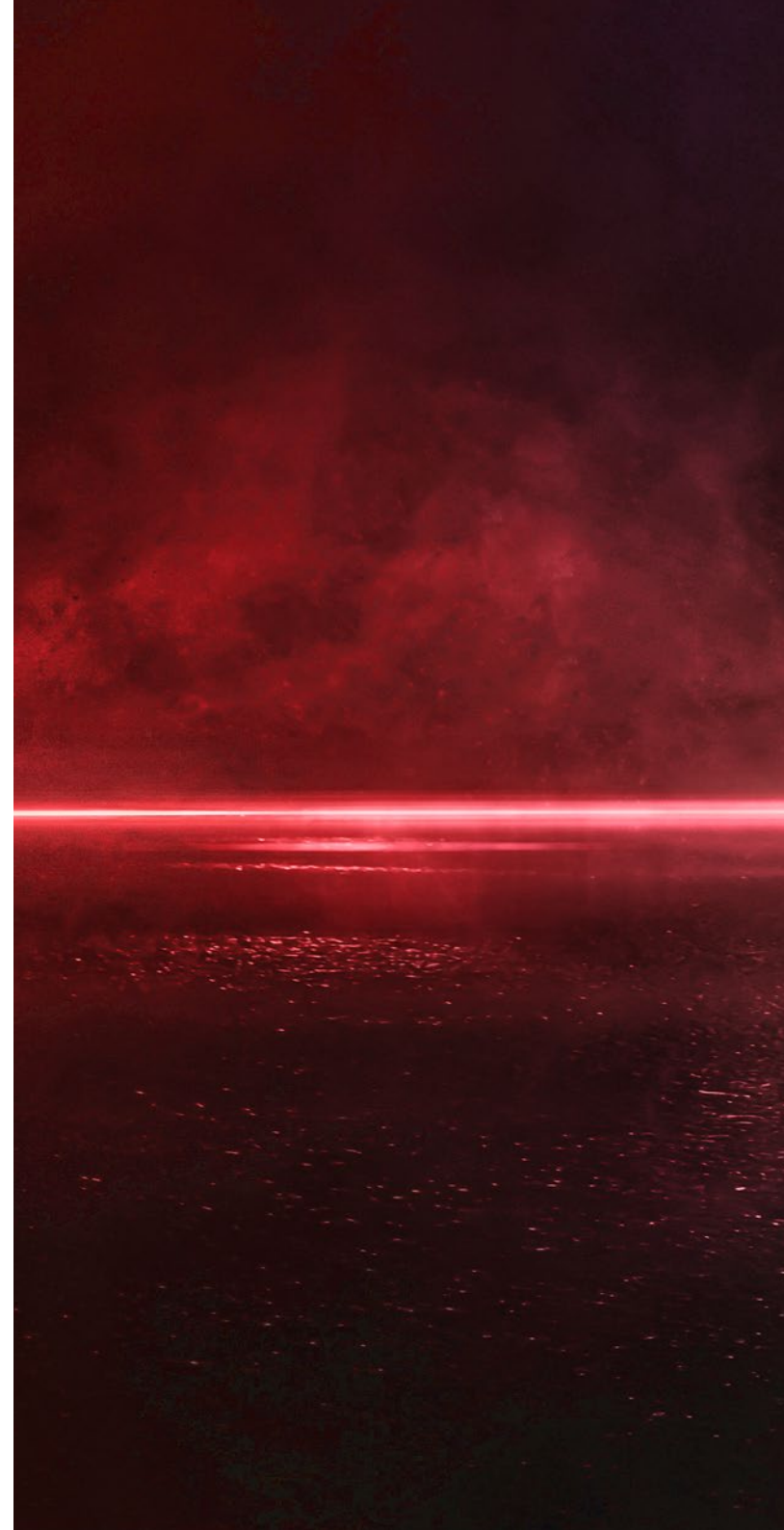
LINC-CUT

FIBER 1530 A

A Turn Key Solution For Fiber Laser Cutting:

- Centralised control console
- Fiber laser power source up to 6 Kw
- Double shuttle table 1500 x 3000 mm
- Protective enclosure
- Security windows for better viewing
- Secure laser head access door
- Light safety barrier
- Fume Extraction with DIGIFILTER
- 2 year warranty*

**Refer to the conditions of application of the automatic guarantee charter on your Lincoln Electric site*



Everything is designed to produce the best cutting quality

- Linear guides
- Fast Accel/Decel
- Helical drive
- Rigidity and mechanical precision
- Automatic lubrication
- Perfect synchronisation between the laser and machine movements



Optimal visualisation for monitoring operations safely: wide door and windows certified EN 12254.

Centralised CNC for all controls and supervision of the machine, movements, laser process, fume treatment, large screen integrating 2 cameras. Interconnected with the ETIC remote service module.

Special attention regarding safety, compliant to European standards, certified in collaboration with one of the most demanding European organisation.

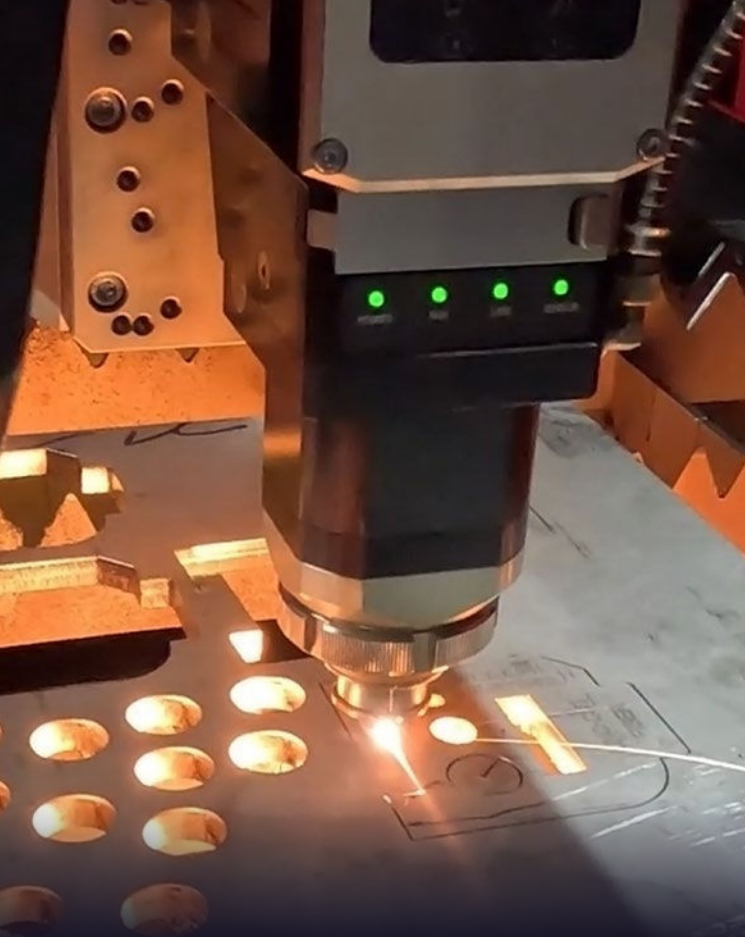


Fully automatic shuttle table protected by a light barrier with easy access to simplify the loading and unloading.



Suction table compartmentalised with pneumatic selection interconnected to the self cleaning filter DIGIFILTER for an effective fume extraction.

Air-conditioned electrical cabinet to ensure a stable operation, including especially the fiber laser source.



HIGH QUALITY Cutting Head

with optimal cooling, autofocus,
automatic calibration of the sensor
height and cutting gas:
all parameters to ensure an
optimal and repeatable cut.

Fiber Laser Installation

3 or 6 Kw fiber laser pack including:

- Autofocus laser head with automatic gas calibration and cutting height for optimum cut quality and repeatability.
- Compact laser source with fiber core diameter of 75 μm for superior cutting quality.
- Height regulation system with automatic calibration.
- A gas console with automatic adjustment and selection.
- Interconnected EtherCat technology with digital control of the laser source, laser head, height control and axes for optimum control and monitoring of the process.



Digital Control



It is equipped with a large control screen integrating visualisation of 2 monitoring cameras. It controls all machine operations. It includes automatic drawing and nesting software and database parameter for all thicknesses on mild steel, stainless steel and aluminum materials.

Its advanced functions:

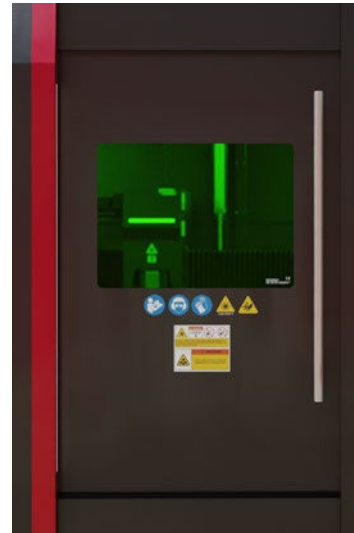
- **"Flycut"**: Increase cutting productivity by set of small interior contours on thin thickness.
- **"Fast Cutting"**: Reduce the time between cuts.
- **"Smooth MicroJoint"**: bridging small parts to prevent them from falling over.
- **"Frame Border"**: Simply check if a set of parts can be cut on a scrap.
- **"Circle Centering"**: Find the center of a disk.
- **"Avoid Collision in travel"**: Manage intelligently the rise of the laser head when moving quickly and avoid collisions with toggled parts.

Secure and Sustainable

Secure

Complying with machine directive 2006/42/EC.

- Safety labeling with marking glass EN 12254.
- A set of protections prevents to cut and move the machine with the door open, ensuring a protective cover against laser radiation and related injuries to the movements of the machine.
- CE certified components.
- CNC use key or remote control.
- Cycle of the shuttle table secured.
- Suction filter interconnected.



Sustainable

- Machine structure with integrated suction section.
- Drawers for small parts and small scraps.
- Smoke extraction with DIGIFILTER.
- Protection of the machine frame against power laser using refractory bricks.
- Automatic lubrication of linear rails and helical rack pinions.
- Automatic gas selection and regulation.
- Electrical cabinet with air conditioning.
- Interior cabin lighting using LED strips.
- CNC remote control.
- Laser head cleaning brush on cycle.



Double Shuttle Table

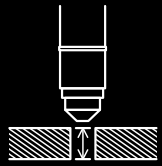


Automatic Suction Tables:

- For loading and unloading sheets and parts in complete safety.
- Optimum protection: light barrier and pneumatic access hatch into the enclosure.
- Rapid table exchange cycle.
- Load up to 1T.

Main performances:

| Positioning speed | Precision of positioning | Acceleration | Work area (mm) | Max load |
|-------------------|--------------------------|--------------|--|---|
| 110 m/min | 0.03 mm | 1.2 G | 1 530 x 3 100 For sheet metal size: 1 500 x 3 000 / 1 250 x 2 500 / 1 000 x 2 000 | 1T 20 mm steel 1 500 x 3 000 = 706 kg 25 mm steel 1 500 x 3 000 = 883 kg |



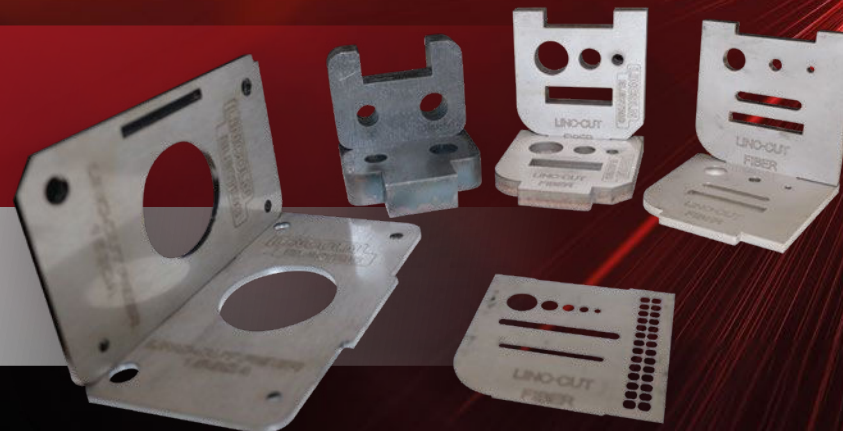
| Cutting capacity | | Steel | S. steel | Aluminum |
|------------------|------------|-------|----------|----------|
| 3 kW | Production | 16 mm | 6 mm | 5 mm |
| | Maximum | 20 mm | 10 mm | 8 mm |
| 6 kW | Production | 20 mm | 12 mm | 10 mm |
| | Maximum | 25 mm | 14 mm | 12 mm |



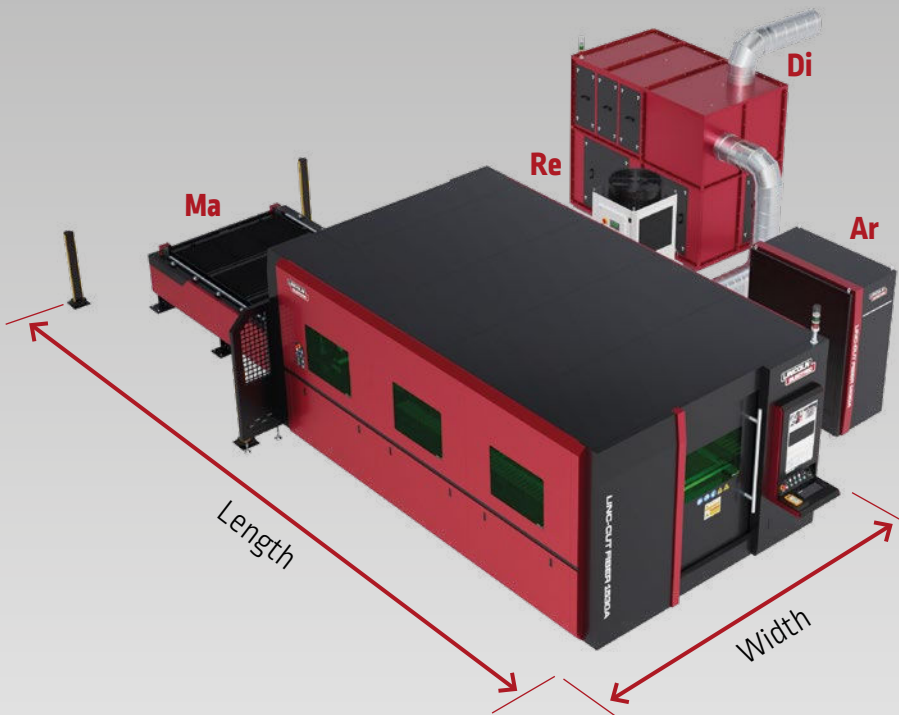
| | | |
|----------------|------------|----------------------|
| 3 mm steel | 24.5 m/min | Air 6kW |
| 6 mm steel | 2.8 m/min | O ₂ 3kW |
| 10 mm steel | 2.2 m/min | O ₂ 4,5kW |
| 3 mm S. steel | 24.5 m/min | N ₂ 6kW |
| 10 mm S. steel | 2.25 m/min | N ₂ 6kW |
| 5 mm alu | 10 m/min | N ₂ 6kW |

+ 43 %* OF PRODUCTIVITY

* nesting of parts on 1500 x 3000 mm steel sheet, 8 mm thickness



Typical layout:



| | Length (mm) | Width (mm) | Height (mm) |
|---|-------------|------------|-------------|
| Machine and its sheet metal loading area (Ma) | 10 270 | 4 050 | 2 384 |
| Electrical cabinet (Ar) | 1 720 | 780 | 1 980 |
| Cooler (Re) | 829 | 822 | 1 880 |
| Digifilter (Di) | 1 800 | 1 480 | 2 275 |

Power supply:

| 3 kW | 6 kW | Filter |
|--|--|--|
| 380-415 V 3ph 34.8 kW / 43 kVA / 62 A | 380-415 V 3ph 48.8 kW / 60 kVA / 87 A | 380-415 V 3ph 5.5 kW / 7 kVA / 10 A |

Gas supply:

| O ₂ | N ₂ | Air |
|---|---|--|
| Pressure: 9 bars Purity 99.5% Max flow 10 m ³ /h | Pressure: 25 bars Purity 99.995% Max flow buse D6 185 m ³ /h 2 mm 4KW D1.5: 15 m ³ /h 5 mm 4KW D2.5: 40 m ³ /h 8 mm 4KW D3.0: 70 m ³ /h 15 mm 4KW D4.5: 130 m ³ /h | Pressure: 13 bars Purity: ISO 8573-1 Class 1-4-1 Max flow 80 m ³ /h |

CUSTOMER ASSISTANCE POLICY

The business of Lincoln Electric is manufacturing and selling high quality welding equipment, consumables, and cutting equipment. Our challenge is to meet the needs of our customers and to exceed their expectations. On occasion, purchasers may ask Lincoln Electric for information or advice about their use of our products. Our employees respond to inquiries to the best of their ability based on information provided to them by the customers and the knowledge they may have concerning the application. Our employees, however, are not in a position to verify the information provided or to evaluate the engineering requirements for the particular weldment. Accordingly, Lincoln Electric does not warrant or guarantee or assume any liability with respect to such information or advice. Moreover, the provision of such information or advice does not create, expand, or alter any warranty on our products. Any express or implied warranty that might arise from the information or advice, including any implied warranty of merchantability or any warranty of fitness for any customers' particular purpose is specifically disclaimed.

Lincoln Electric is a responsive manufacturer, but the selection and use of specific products sold by Lincoln Electric is solely within the control of, and remains the sole responsibility of the customer. Many variables beyond the control of Lincoln Electric affect the results obtained in applying these types of fabrication methods and service requirements.

Subject to Change – This information is accurate to the best of our knowledge at the time of printing. Please refer to www.lincolnelectriceurope.com for any updated information.



www.lincolnelectric.eu

LINCOLN
ELECTRIC